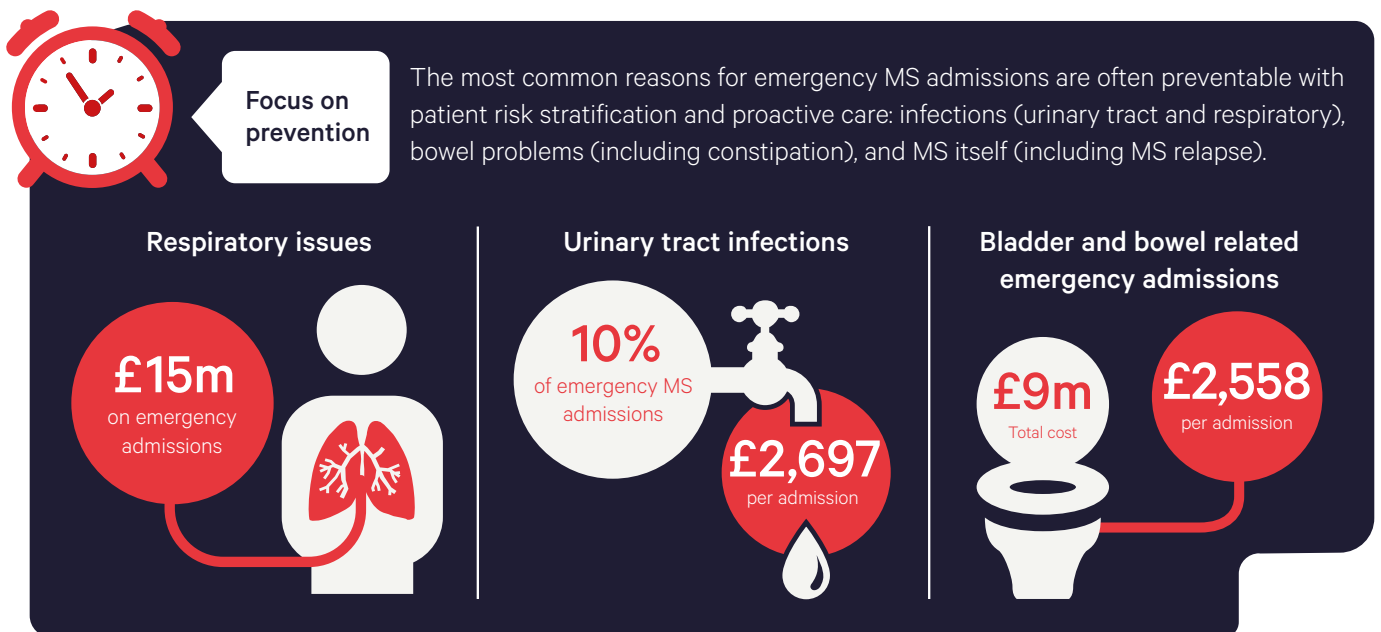
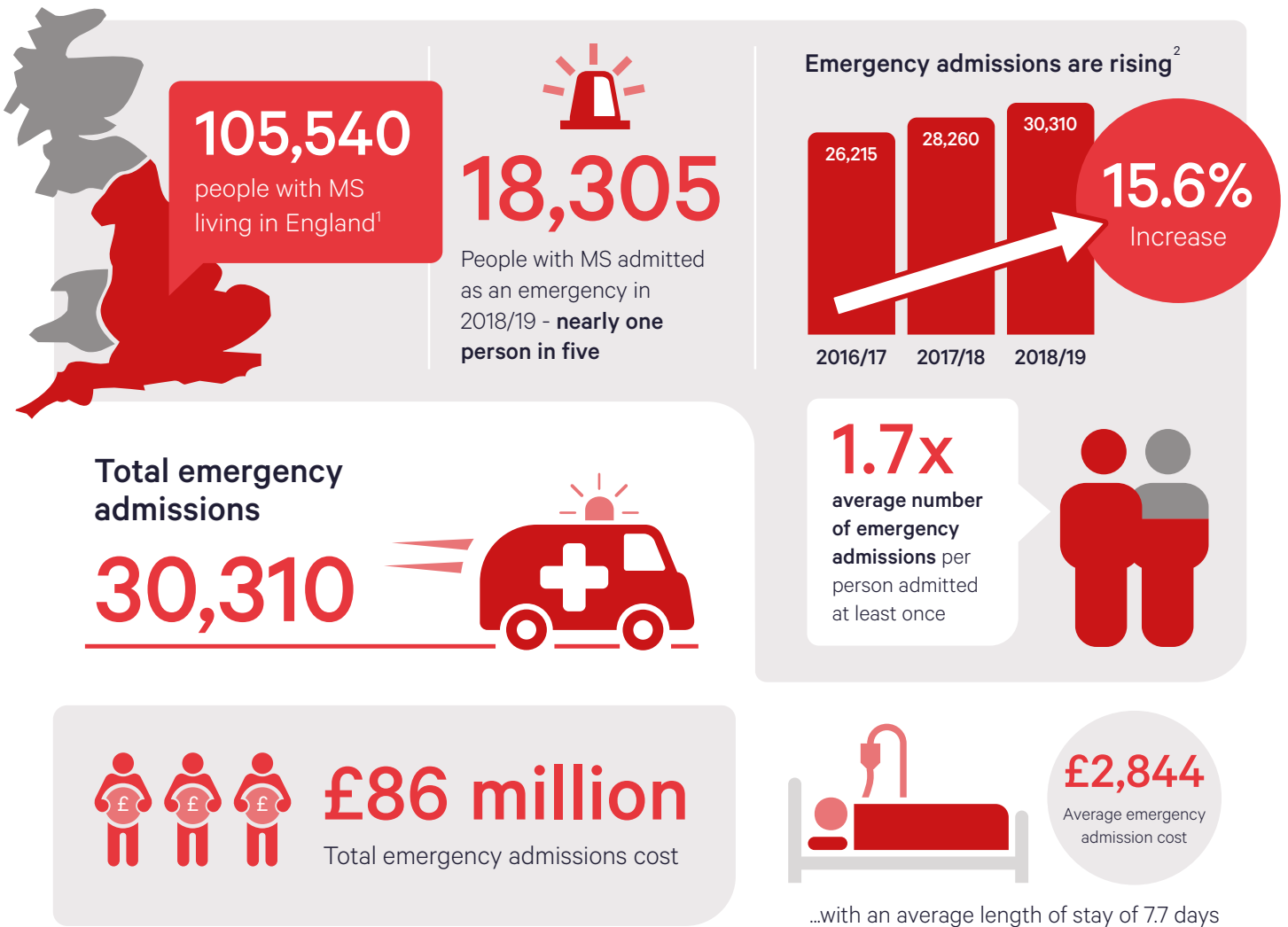


Multiple Sclerosis: Raising the bar

Emergency hospital admissions 2018/19



Prevalence of MS in the UK^{1,3}

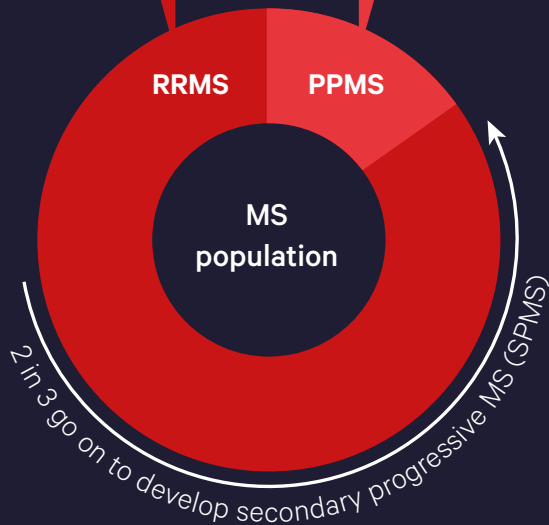
Types of MS

85%

have relapsing remitting MS (RRMS) at onset

15%

have primary progressive MS (PPMS) at onset



People with MS

New diagnoses each year

England | 105,540 | 5,000

Wales | 5,590 | 700

Scotland | 15,750 | 700

Northern Ireland | 4,830 | 200

Prevalence estimates^{1,3}

Northern Ireland

RRMS	PPMS	SPMS
4,106	725	3,222

Wales

RRMS	PPMS	SPMS
4,752	839	3,739

Scotland

RRMS	PPMS	SPMS
13,385	2,363	10,505

England

RRMS	PPMS	SPMS
89,709	15,831	70,395

References

- Lumicisi B, Jackson M, Szczepaniak M (2019) Estimating the prevalence and incidence of MS in the UK using the THIN primary care data base. Poster presented at the MS Trust 2019 annual conference Hinkley Island.
- NHS Digital Hospital Episode Statistics 2018/2019 MS Emergency Hospital Admissions
- ONS Mid-Year Population Estimates. Available at: www.ons.gov.uk

To quote this infographic please cite: Thomas Sue, Thomas Stephen, Mehta Sarah (2020) MS Hospital Episode Statistics Emergency Admissions 2018/19 Wilmington Healthcare London