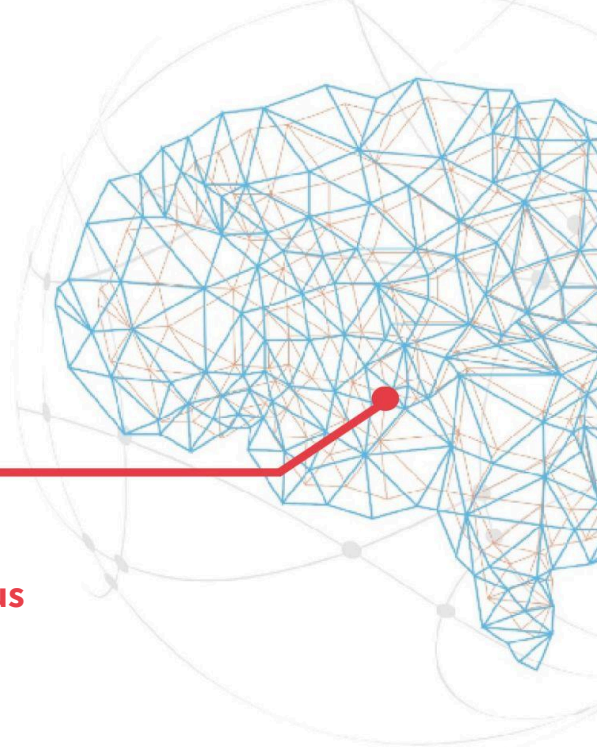


Cutting Edge Science for Parkinson's Clinicians



Wednesday, 11th November 2026
Virtual & Halifax Hall, Sheffield University Campus

Programme subject to change

09:00 **Registration opens**

09:30 **Welcome and Introduction**

Chairs: Dr Neil Archibald, consultant neurologist & clinical director for neurology and stroke, South Tees Hospitals NHS Foundation Trust & Dr Lucia Ricciardi, senior lecturer in neurology & consultant neurologist, City St George's, University of London

09:45 **Neuro-urology - early and late stage assessment and management**

Prof Ryuji Sakakibara, neurologist, Neurology Clinic Tsudanuma and Dowakai Chiba Hospital, Japan

10:30 **The gut-brain axis in Parkinson's**

Dr Valentina Leta, consultant neurologist, Fondazione IRCCS Istituto Neurologico, Milan

11:15 **Refreshments**

11:45 **Genetics of "atypical" Parkinsonian disorders**

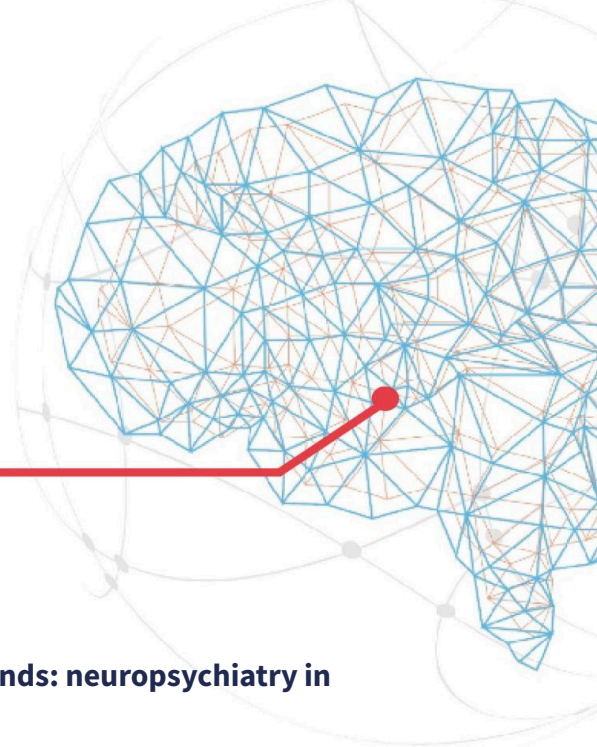
Prof Huw Morris, professor of neurology and neurogenetics, University College London Hospitals NHS Foundation Trust

12:30 **The immune system in Parkinson's - what do new models tell us about what we see in clinic**

Dr Julia Greenland, clinical research associate, University of Cambridge

13:15 **Lunch**

Cutting Edge Science for Parkinson's Clinicians



14:15 **What neurology sees, what neuropsychology finds: neuropsychiatry in Parkinson's**

Dr Elena Makovac, clinical neuropsychologist & senior lecturer in clinical psychology, King's College Hospital NHS Foundation Trust & Prof Anette Schrag, professor of clinical neuroscience & consultant neurologist, University College London

15:00 **Refreshments**

15:30 **How to think about psychosis - and how to treat it**

Dr Neil Archibald

16:15 **TBC**

TBC

17:00 **Meeting close**