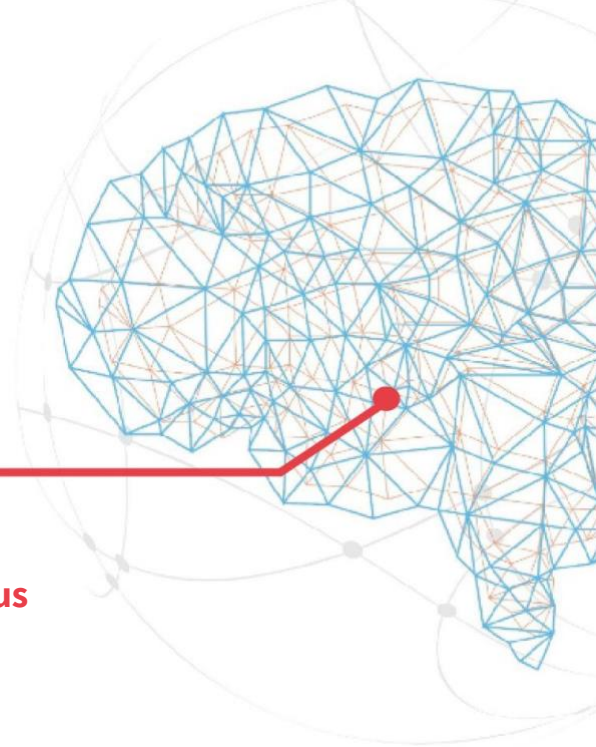


# Cutting Edge Science for Parkinson's Clinicians



**Wednesday, 11th November 2026**  
**Virtual & Halifax Hall, Sheffield University Campus**

*Programme subject to change*

**09:00**     **Registration opens**

**09:30**     **Welcome and Introduction**

Chairs: Dr Neil Archibald, consultant neurologist & clinical director for neurology and stroke, South Tees Hospitals NHS Foundation Trust & Dr Lucia Ricciardi, senior lecturer in neurology & consultant neurologist, City St George's, University of London

**09:45**     **Neuro-urology - early and late stage assessment and management**

Prof Ryuji Sakakibara, neurologist, Neurology Clinic Tsudanuma and Dowakai Chiba Hospital, Japan

**10:30**     **The immune system in Parkinson's - what do new models tell us about what we see in clinic**

Dr Julia Greenland

**11:15**     **Refreshments**

**11:45**     **Genetics of "atypical" Parkinsonian disorders**

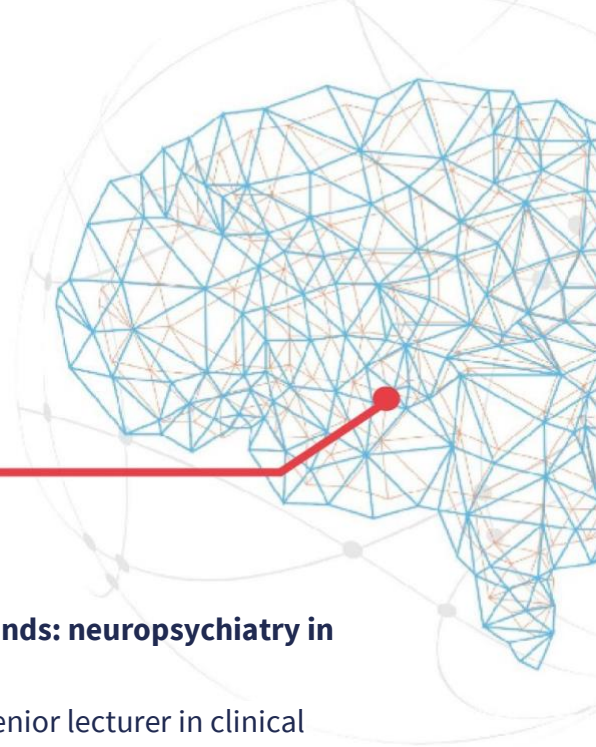
Prof Huw Morris, professor of neurology and neurogenetics, University College London Hospitals NHS Foundation Trust

**12:30**     **Gene therapies - how close are we to a breakthrough in neurological disorders**

**13:15**     **Lunch**

# Cutting Edge Science for Parkinson's Clinicians

---



- 14:15**     **What neurology sees, what neuropsychology finds: neuropsychiatry in Parkinson's**  
Dr Elena Makovac, clinical neuropsychologist & senior lecturer in clinical psychology, King's College Hospital NHS Foundation Trust & Prof Anette Schrag, professor of clinical neuroscience & consultant neurologist, University College London
- 15:00**     **Refreshments**
- 15:30**     **How to think about psychosis - and how to treat it**  
Dr Neil Archibald
- 16:15**     **The gut-brain axis in Parkinson's -TBC**
- 17:00**     **Meeting close**